



IPIC 2023

9th International
Physical Internet Conference

June 13-15, 2023
Athens, Greece

Session 1.D Innovative transportation packaging and load units pools supporting efficiency and sustainability

En route towards a Net Zero Carbon emission & Fully Connected Global Freight Transport.

Sotirios Ptochos
Co-founder, Senior Executive



13-15 JUNE 2023 Athens, Greece
www.pi.events/IPIC2023

alice | Alliance for
Logistics Innovation
through Collaboration
in Europe

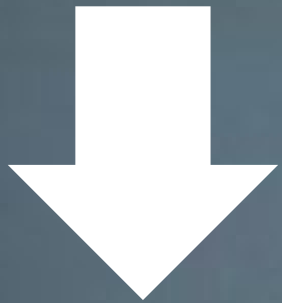


Expanding the logistics Scope

Did you know that...




30%
Weight



Efficiency

26%–85%

Did you know that...

An aerial photograph showing a logging operation in a tropical forest. On the left, a cleared area of reddish-brown earth contains several large, neat stacks of cut logs. To the right, a dense, lush green forest remains. A thin green horizontal line is visible across the upper part of the forest. The text 'Trees are cut to manufacture wooden floor trucks, trailers, containers, pallets and other logistic units...' is overlaid on the left side of the image.

Trees are cut to
manufacture
wooden floor
trucks, trailers,
containers, pallets
and other
logistic units...

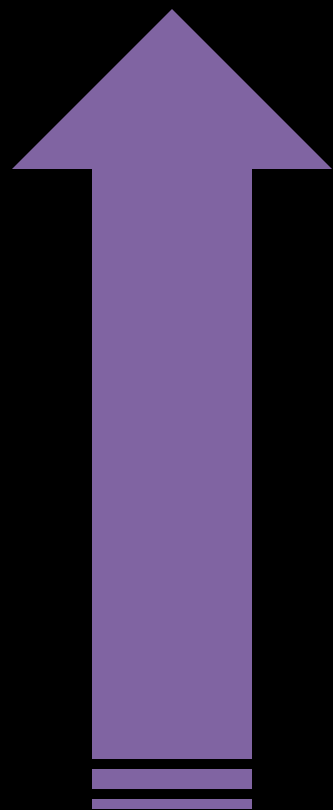
Today,
10 Billion more trees
are cut down than are
planted every year

Did you know that...

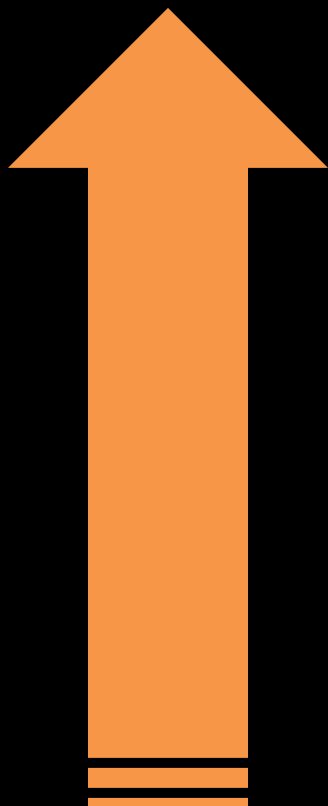


We have never had
as many containers
on the market as
now...

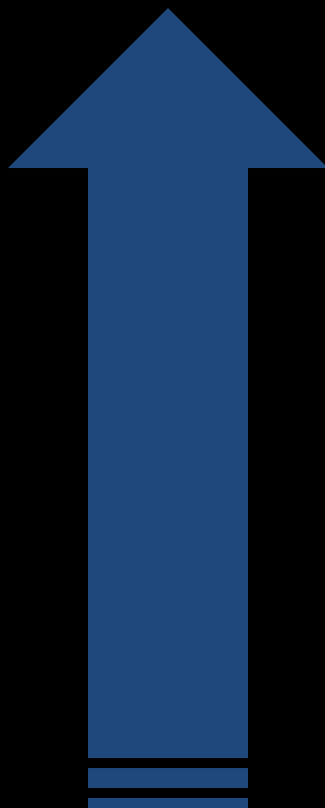
... They are not managed
optimally as we do not
have visibility.



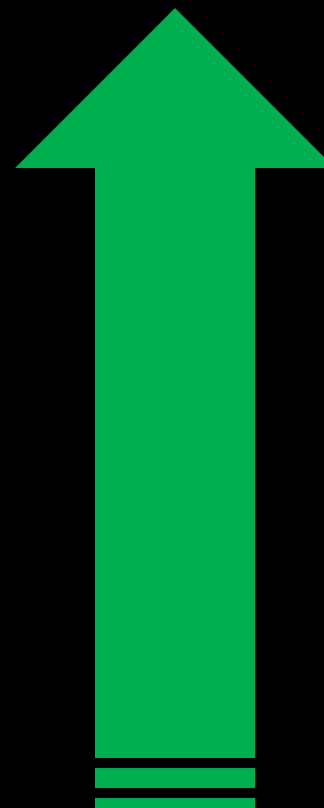
Quality



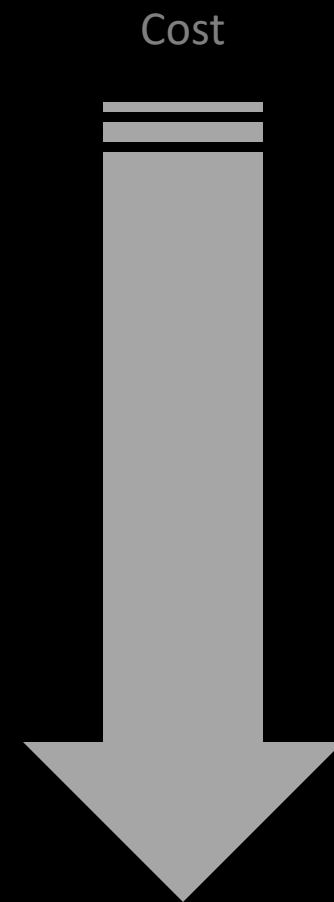
Speed

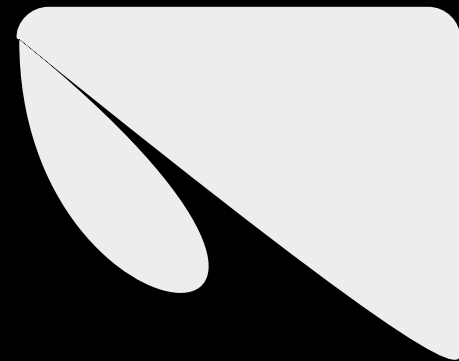


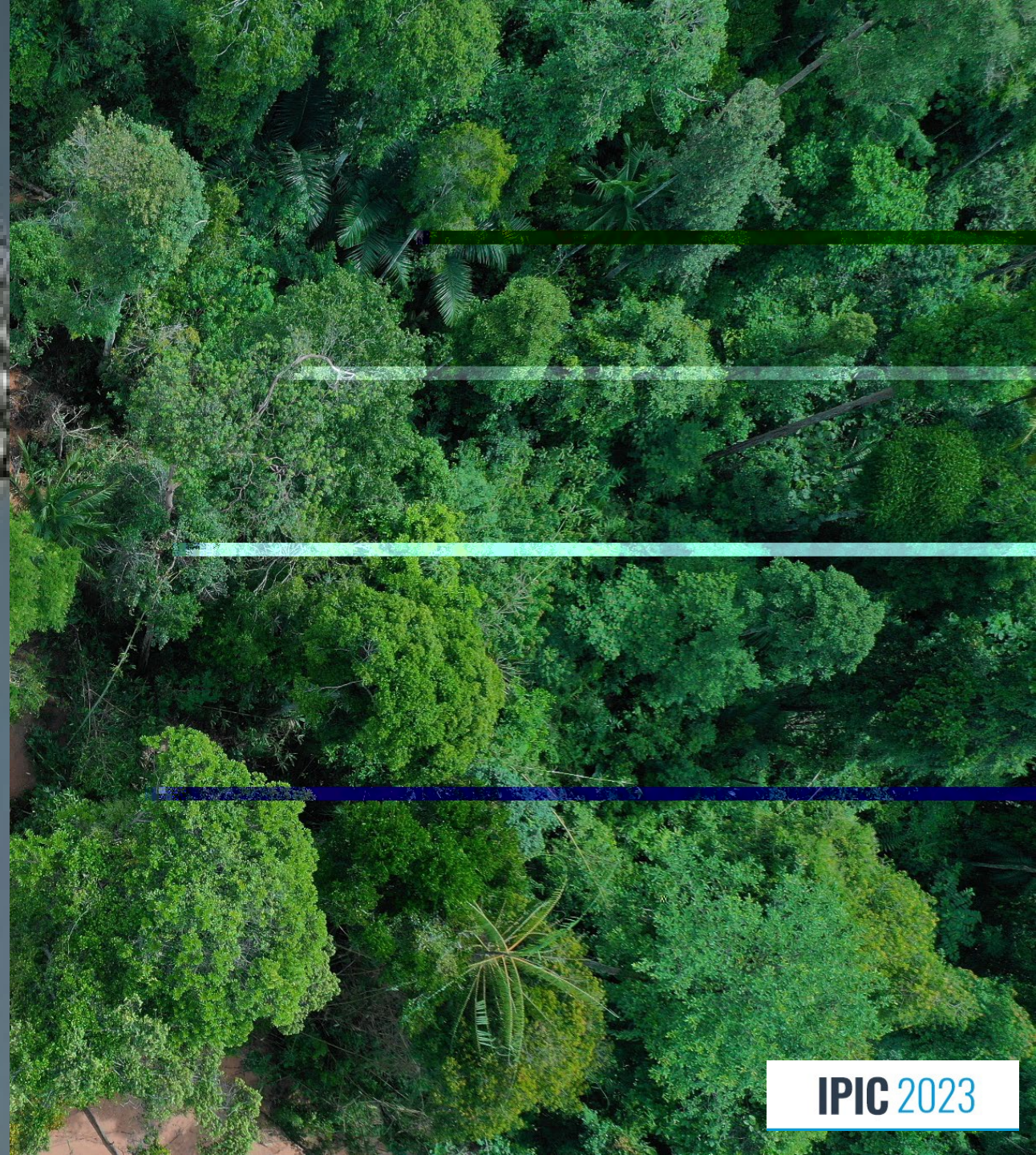
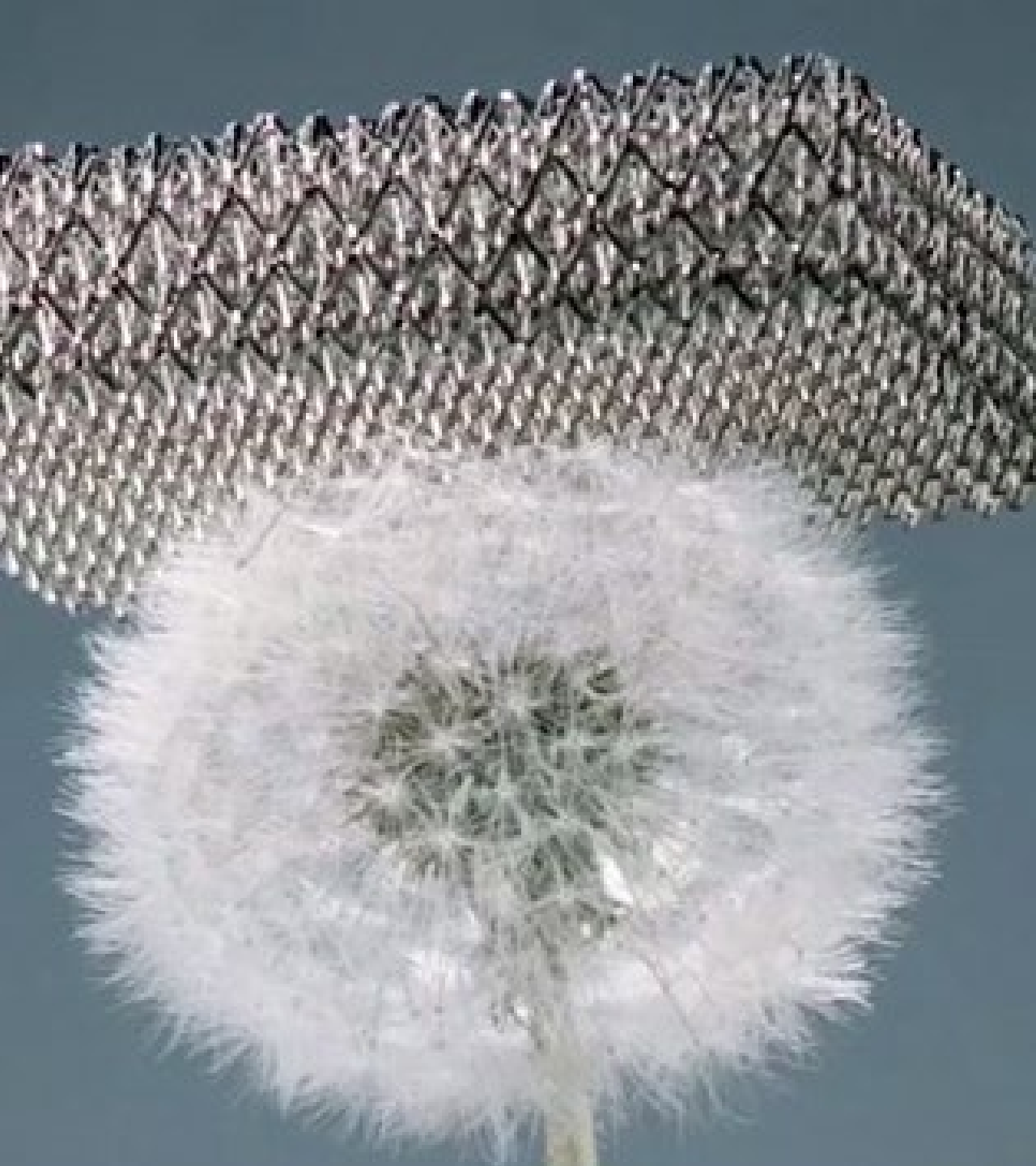
Efficiency



Environment









Save 205mn trees

Absorb 5,2mmt CO₂ / year

Reduce the amount of steel used

Stronger, safer (best in class)

Up to 54.68% lighter

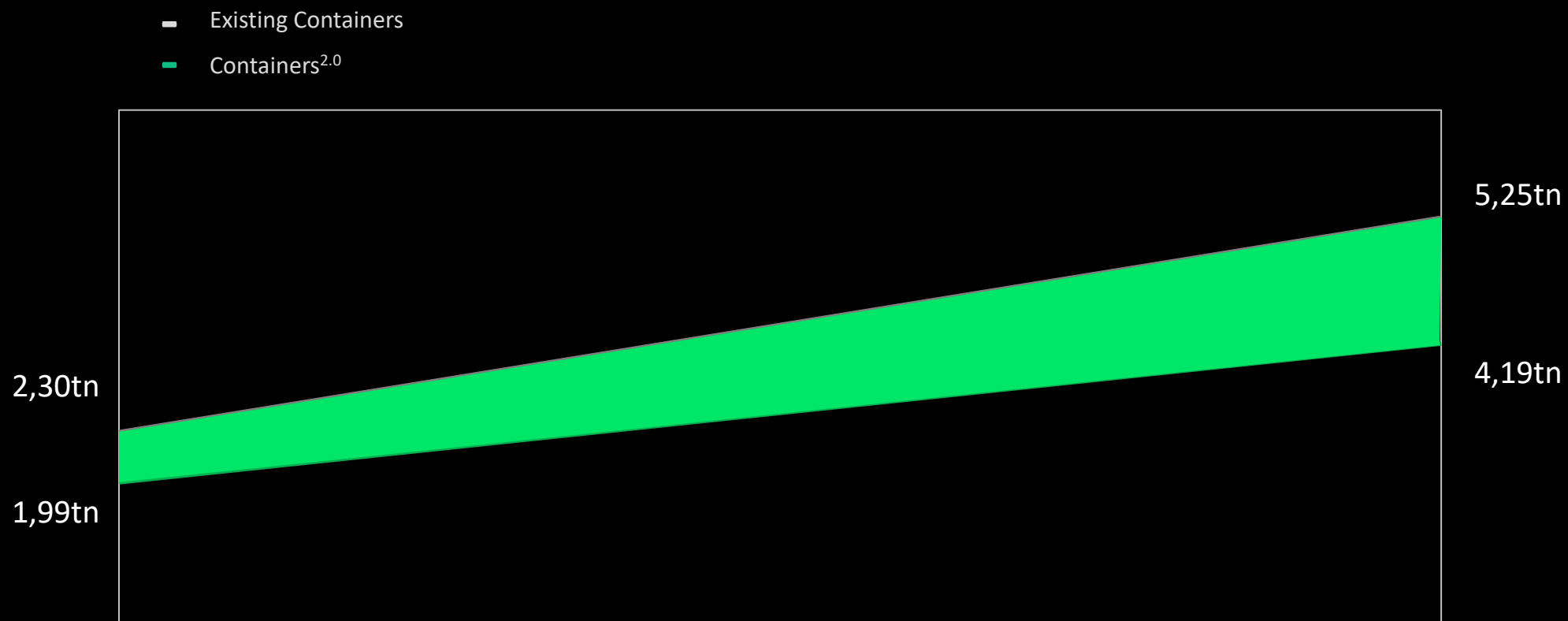
100% recyclable

No change to the production line

Cleaner, naturally hygienic, odorless



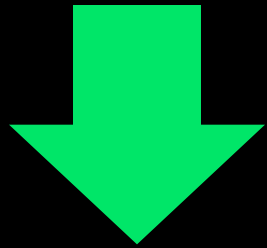
Weight reduction



Container 2.0

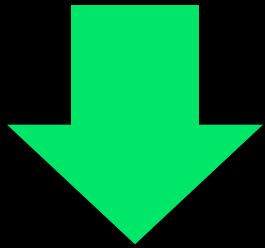
The lightest container in the world

To Reduce...



800mn tons

The annual CO₂e emissions



5%

...of transport annual CO_{2e} emissions

The Container2.0
has the Highest payload
in the world



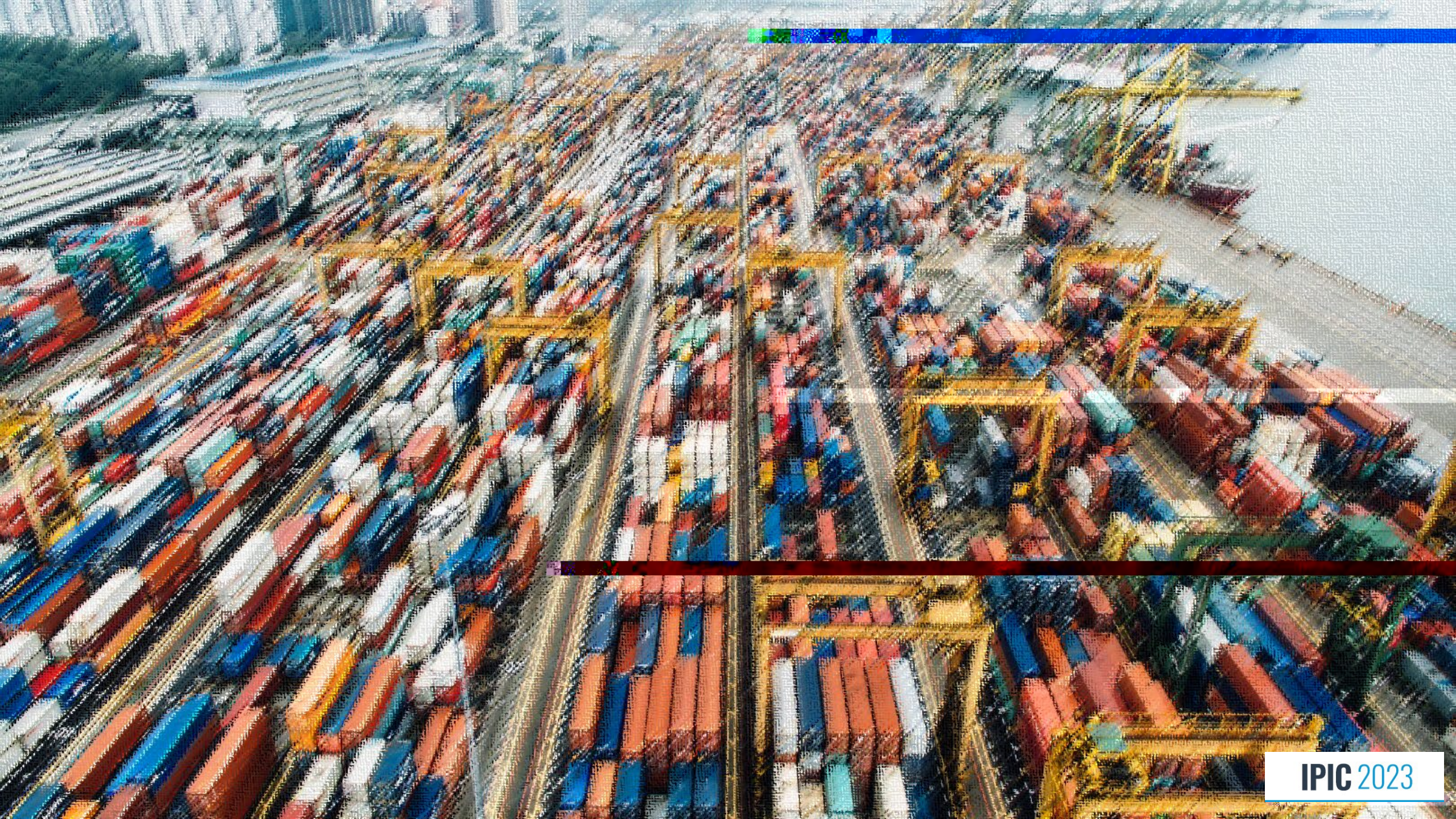
The Container2.0
has been tested with higher
loads than ISO standards



Higher Payload

Less CO₂

Less Costs



Destroyed

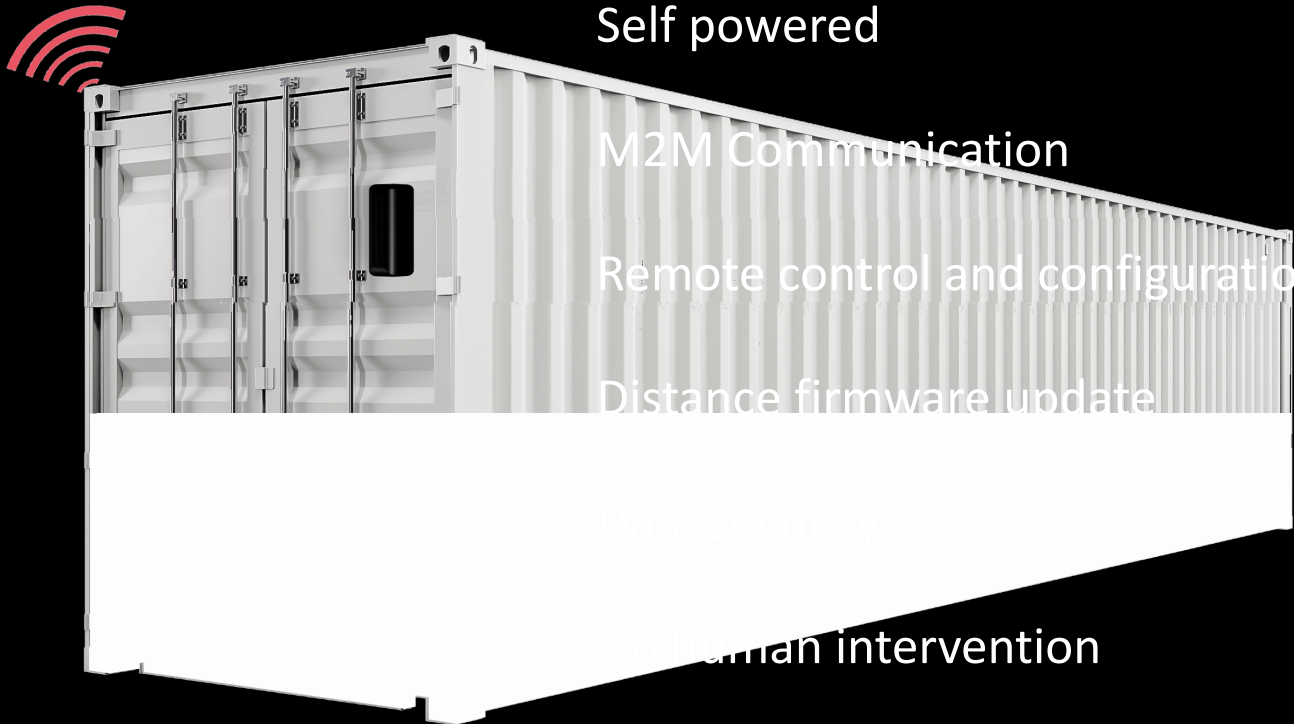
Removed

Deactivated

Delay on borders

Not suitable for all containers

No inside – out communication



Global Coverage

Self powered

M2M Communication

Remote control and configuration

Distance firmware update

Low power device

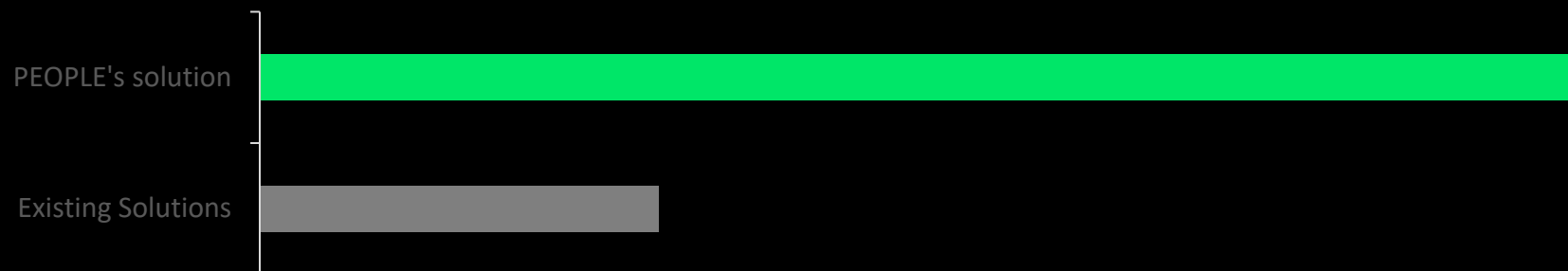
Minimal human intervention

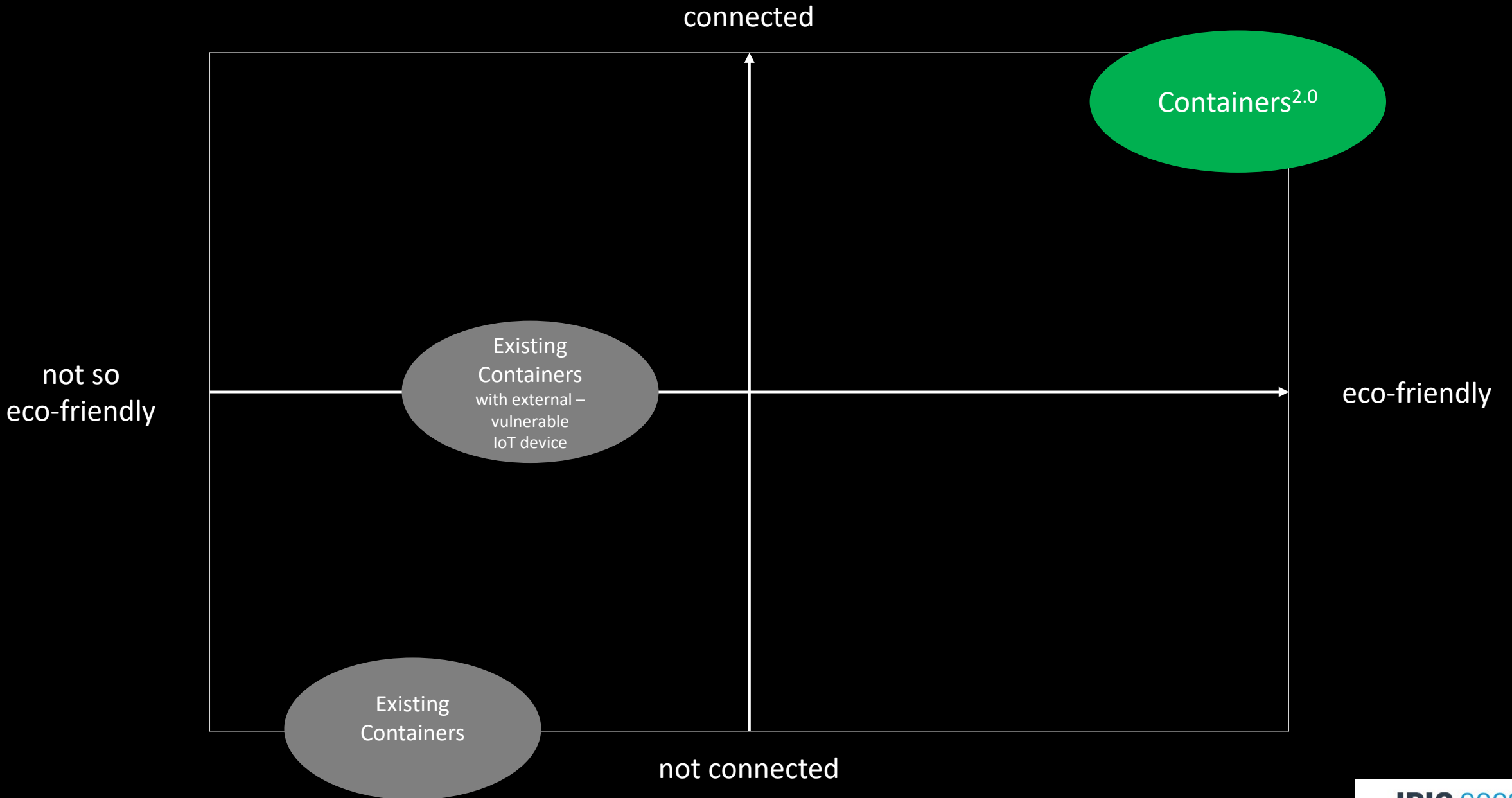
Energy management optimization





10 years







IP PEOPLE

About PEOPLE...

Start Up of the Year 2022

Global AMBA & BGA Excellence Awards

Winner of **Innovation** of the Year award

World of Freight Expo Awards

Winner of Green impact award

World of Freight Expo Awards

TOP 10 Logistics Tech Solutions Providers in Europe

Digital Magazine Logistic Tech Outlook

12

Patents

5

Patents pending

The Challenges...



Reduce CO_{2e}



Save Trees



Increase Visibility

IPIC 2023

We envision...

A fully connected and Net-zero carbon emissions

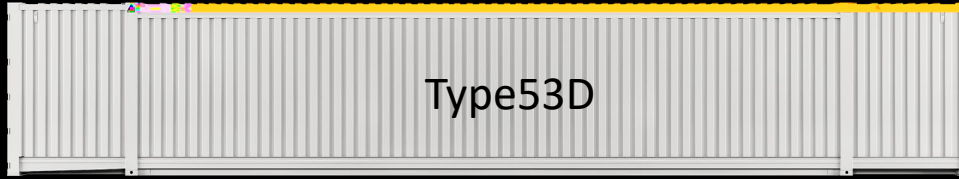
Global freight transport

We have developed...

A breakthrough solutions that collects
and analyzes digital data and gives
right-time visibility to all stakeholders
for a more agile, flexible, safe and
sustainable global supply chain

Our Solutions...

53ft HC



45ft HCPW



40ft HC



20ft DC



The Container2.0

The **Eco-friendliest**
And **Only Smart**
Dry Container In The World

Devices that can be installed
in any logistic unit and make
it smart



Smart Lock



DoubleL



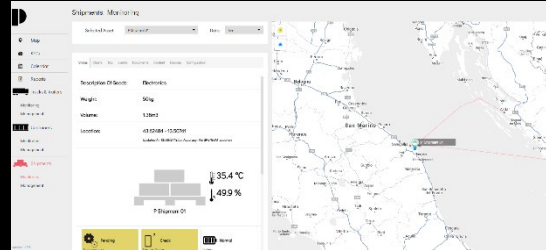
Flex



Coin

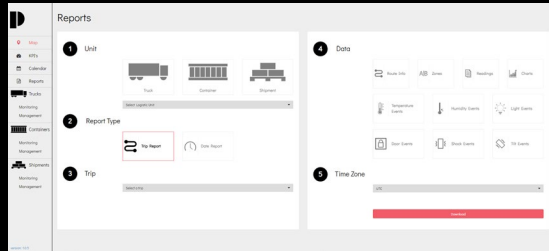


Assets Map

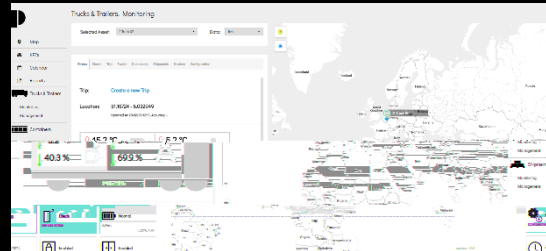


Shipment monitoring

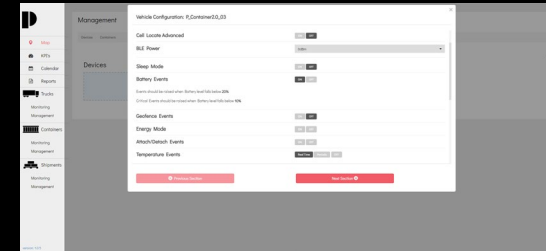
A Breakthrough & Fully Customizable Platform



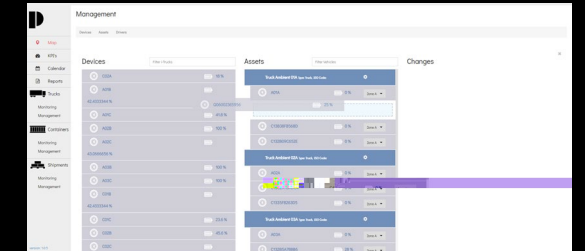
Real-time Reporting



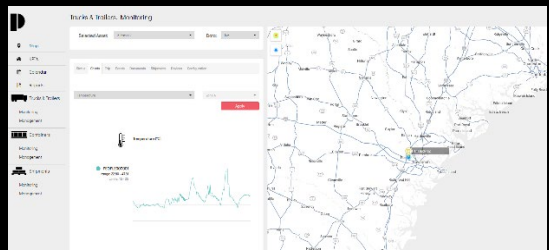
Truck/Trailer monitoring



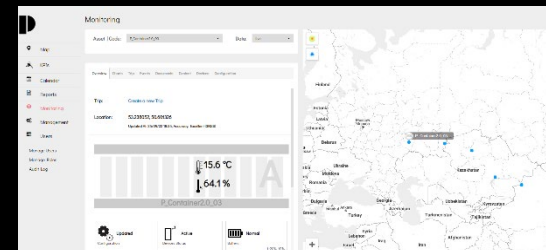
Full distance control



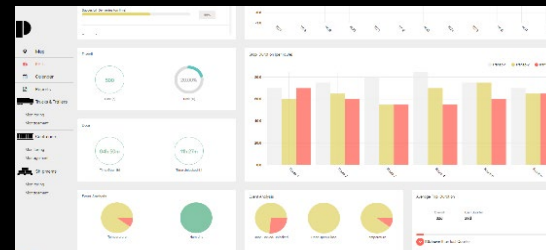
Easy set up & configuration



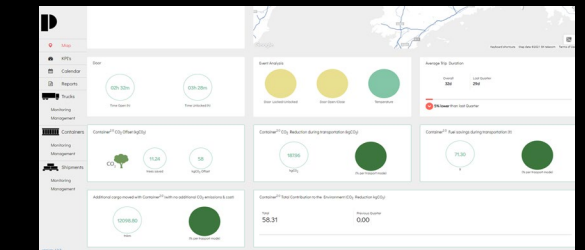
Graphs



Container monitoring



Performance KPIs



Sustainability KPIs

Field of Application

Pharmaceutical



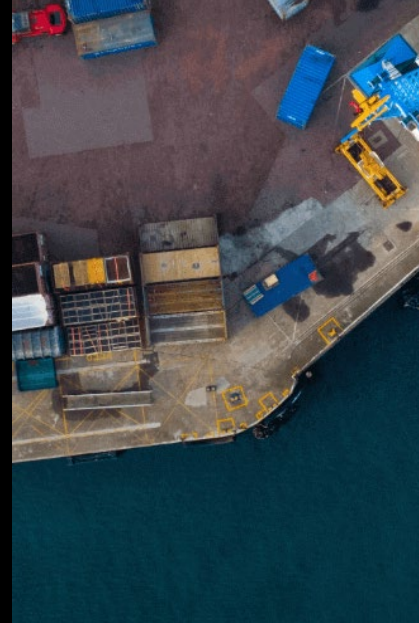
FMCG, FB



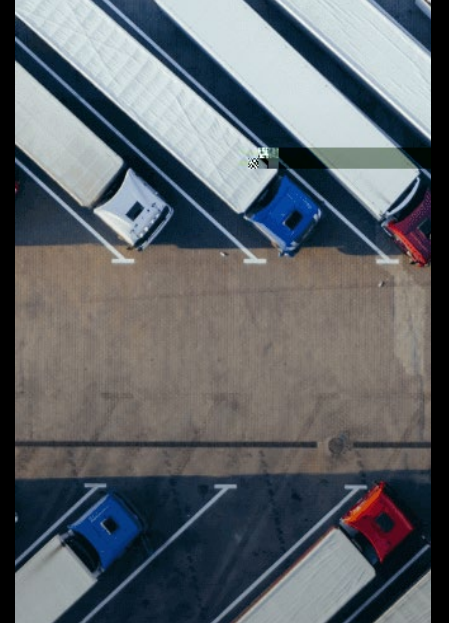
General Cargo



Sea & Land Ports



T&L



Join us...

